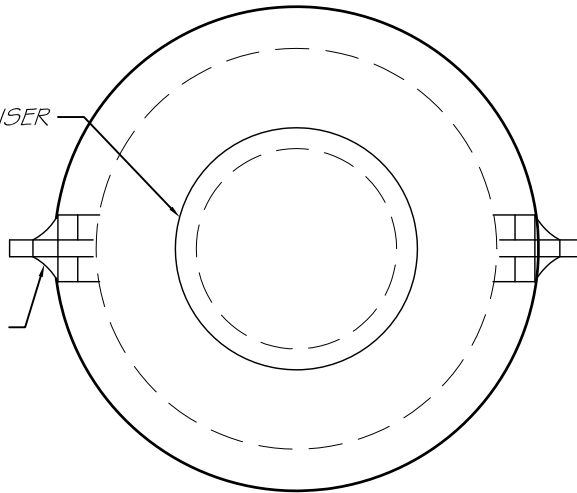
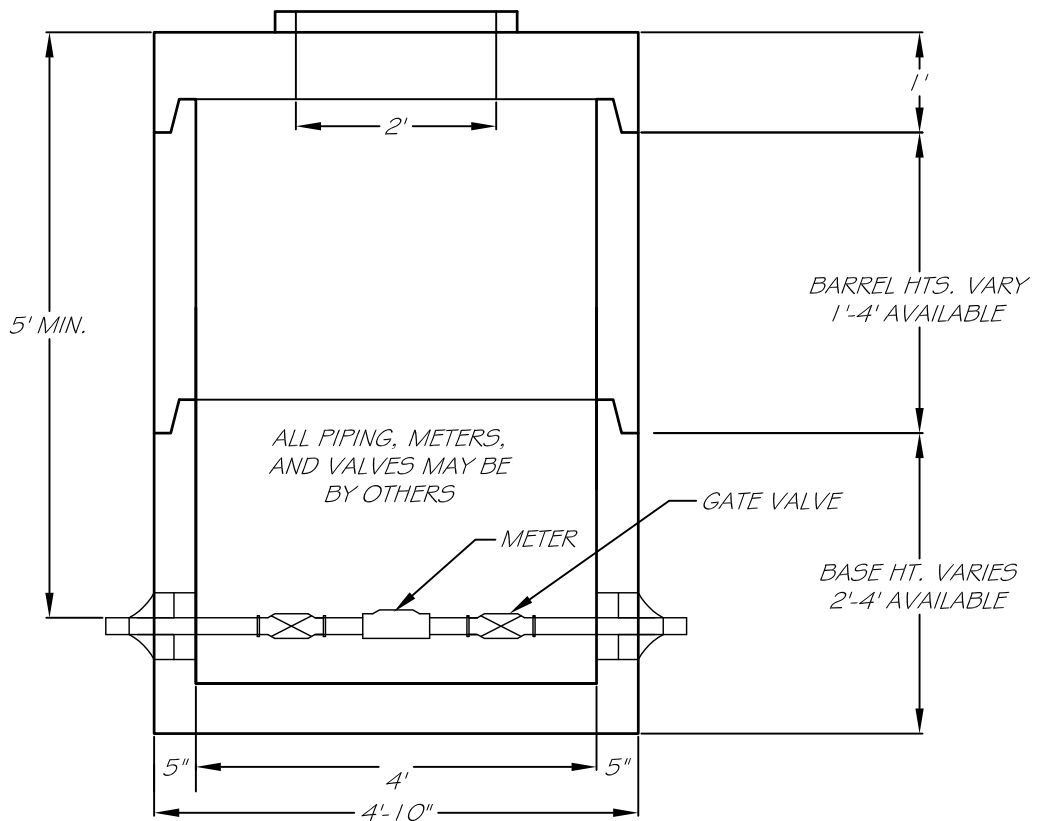


PRECAST CONCRETE COVER/RISER
AS REQUIRED

PIPE BOOT OR LINK SEAL
SIZE AS REQUIRED



PLAN VIEW



SECTION VIEW

5/8" TO 2" METERS

METER BOX

- 1). TO BE INSTALLED AND SUPPLIED BY OWNER.
- 2). MINIMUM 4'-0" DIAMETER (INSIDE).
- 3). WATER METER TO HAVE 5'-8" OF COVER AND IS TO BE SUPPLIED BY P.W.D.
- 4). OWNER IS TO SUPPLY 2 METAL BONDED VALVES INSIDE OF PIT.

COVER PLATE

- 1). COVER MUST WEIGH LESS THAN 60LBS.
- 2). MINIMUM SIZE OF COVER SHALL BE 24 DIAMETER (ROUND OR SQUARE).
- 3). IF STEEL PLATE IS USED. TREAT WITH A COAT OF RED LEAD OR EQUIVALENT.

DESIGN DATA & GENERAL NOTES

1. CONCRETE: 4,000 P.S.I @ 28 DAYS.
2. CEMENT: PORTLAND TYPE III PER ASTM C150-81
3. REINFORCING: CONFORMS TO ASTM C-478
4. ALL PIPING, METER AND VALVES NOT INCLUDED.
5. DESIGN LOADING (H-10)

4' WATER METER PIT (P.W.D.)

www.georgerobertsco.com

George R. Roberts Co.
Precast Concrete Products

192 Biddeford Road Phone 207-324-6571
Alfred, Maine 04002 Fax 207-324-8533