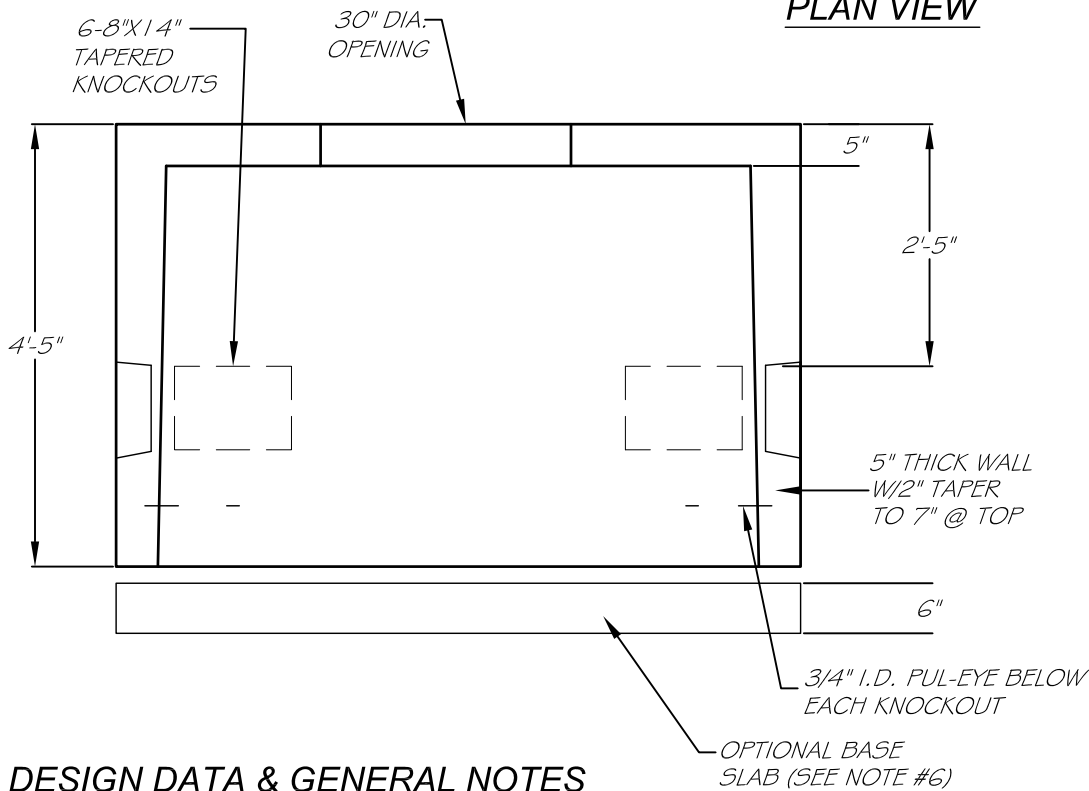


PLAN VIEW



DESIGN DATA & GENERAL NOTES

- 1) CONCRETE: 4,000 PSI @ 28 DAYS.
- 2) CEMENT: TYPE III PER ASTM C150-81.
- 3) REINFORCEMENT: GRADE 60 REBAR.
- 4) OPENINGS SIZED FOR 4" & 6" CONDUITS.
- 5) MEETS ALL CENTRAL MAINE POWER SPECIFICATIONS.
- 6) SUITABLE FOR PRIMARY CABLE INSTALLATIONS.
- 7) IF INSTALLED IN A PAVED AREA, ORDER PRECAST SLAB FOR USE UNDER HANDHOLE FOR ADDITIONAL LOAD BEARING OF TRAFFIC.
- 8) ORDER 32" DIAMETER "CMP CO." & "TELEPHONE" OR FRAME & COVER MIN. ONE COURSE OF BRICK TO GRADE.

REINFORCEMENT SUMMARY

- #5 @ 5" O.C. VERTICALLY IN WALLS CANTILEVERED OVER TOP OF OPENING.
- #4 @ 8" O.C. HORIZONTALLY IN WALLS.
- 4 PIECES #4 SURROUNDING OPENING.
- #4 @ 5" O.C. EACH WAY ON TOP.

4' X 6' UTILITY VAULT

www.georgerobertsco.com

George R. Roberts Co.
Precast Concrete Products

192 Biddeford Road Phone 207-324-6571
Alfred, Maine 04002 Fax 207-324-8533