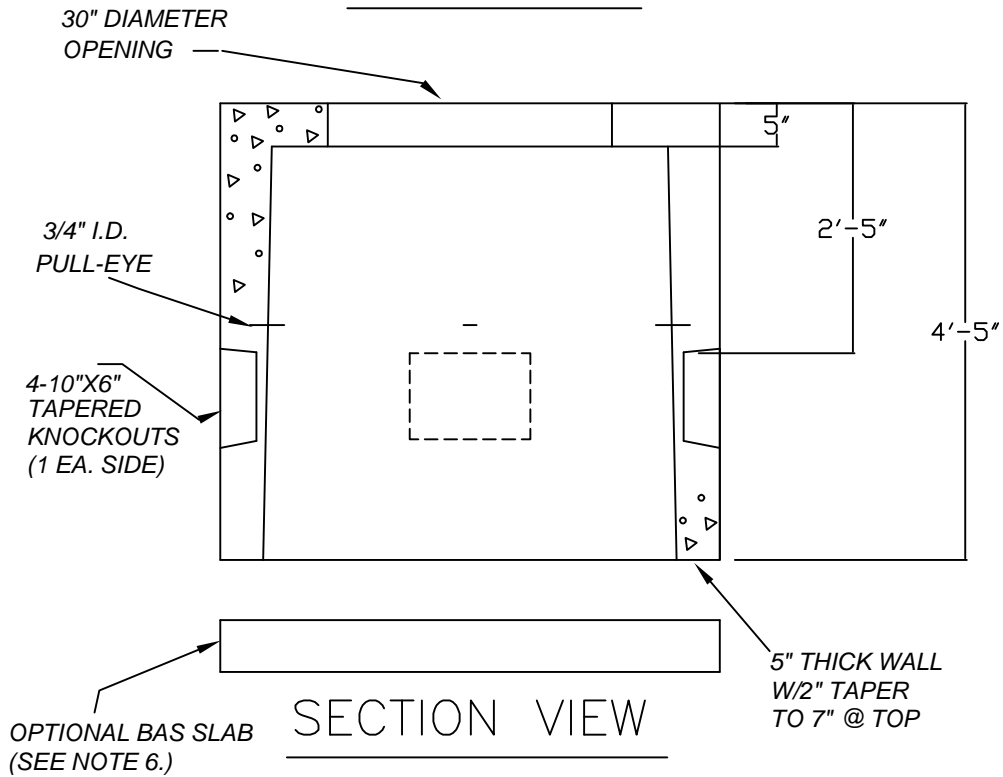


PLAN VIEW



SECTION VIEW

NOTES:

- 1) CONCRETE: 4,000 P.S.I. @ 28 DAYS.
- 2) REINFORCEMENT: GRADE 40 REBAR;
 - #5 @ 8" O.C. VERTICALLY IN WALLS
 - CANTILEVERED OVER TOP OF OPENING.
 - #4 @ 12" O.C. HORIZONTALLY IN WALLS.
 - 4 PIECES #4 SURROUNDING OPENING.
 - #5 @ 8" O.C. EACH WAY ON TOP.
- 3) OPENINGS SIZED FOR 2-4" CONDUITS.
- 4) MEETS ALL CENTRAL MAINE POWER SPECIFICATIONS.
- 5) FOR SECONDARY CABLE INSTALLATIONS ONLY.
- 6) IF INSTALLED IN A PAVED AREA, ORDER PRECAST SLAB FOR USE UNDER HAND HOLE.

4' x 4' x 4'-5" TALL HAND HOLE W/ BASE SLAB

HH-4, HH-SLAB-4

www.georgerobertsco.com

George R. Roberts Co.
Precast Concrete Products

192 Biddeford Road Phone 207-324-6571
Alfred, Maine 04002 Fax 207-324-8533