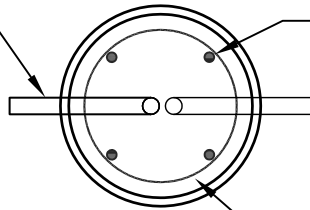


SECTION VIEW

QTY: (VARIES) PVC CONDUIT ORIENTED
SQUARE OFF ANCHOR BOLTS

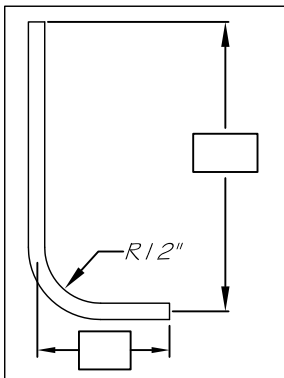


(4) #5 REBAR VERTICAL EQ. SPACED (3" COVER)

#3 BAR HOOPS @ ±12" O.C.

PLAN VIEW

PLEASE PROVIDE
CONDUIT SWEEP DIMENSIONS



QTY.	HEIGHT	DIA.
		18"

DESIGN DATA & GENERAL NOTES

- 1) CONCRETE: 5,000 PSI @ 28 DAYS.
- 2) CEMENT: TYPE III PER ASTM C150-81.
- 3) REINFORCING: PER ASTM A615. GRADE 60

18" DIA. LIGHT POLE BASE

www.georgerobertsco.com

George R. Roberts Co.
Precast Concrete Products

192 Biddeford Road Phone 207-324-6571
Alfred, Maine 04002 Fax 207-324-8533