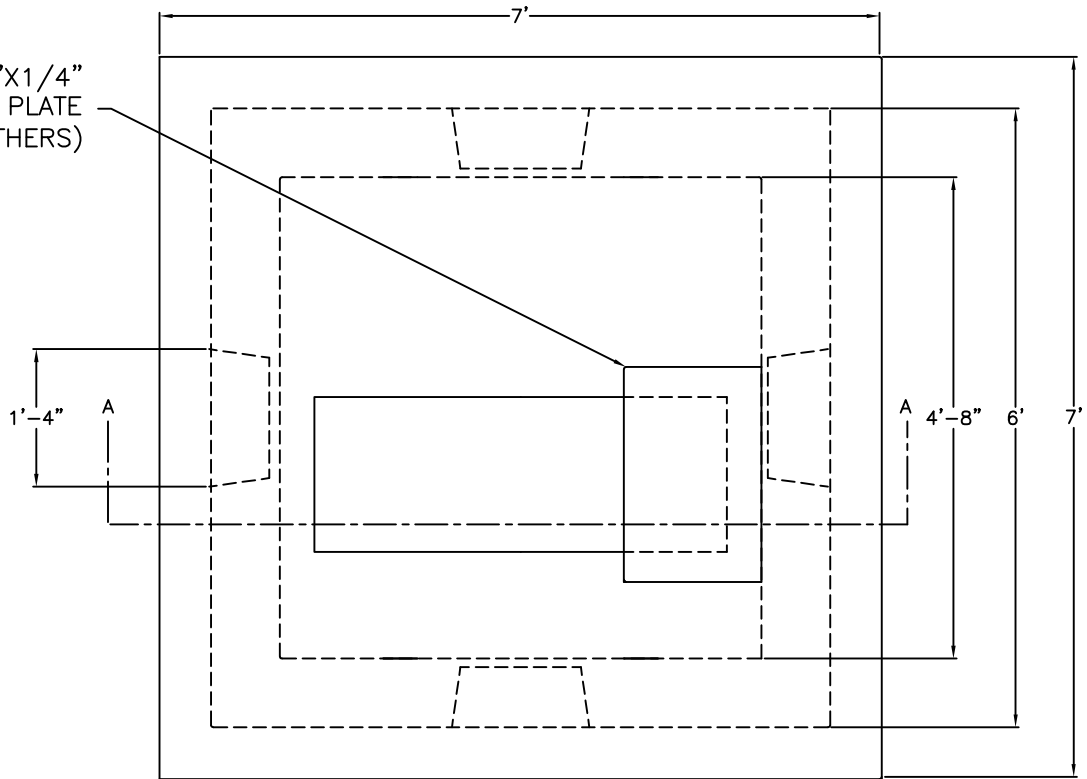
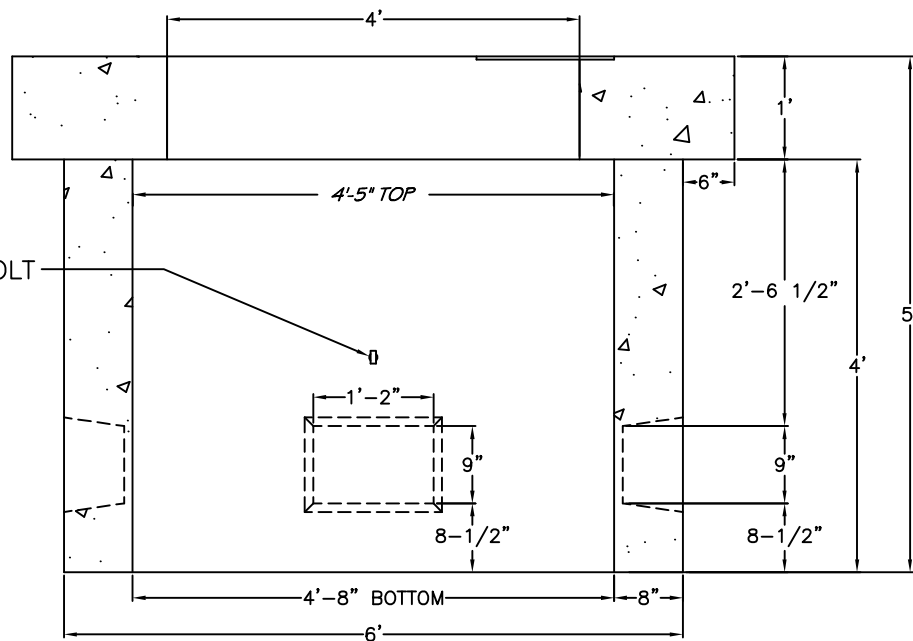


16"X24"X1/4"  
GALVANIZED STEEL PLATE  
(BY OTHERS)



PLAN VIEW

(4) 1/2" GALVANIZED EYEBOLT



SECTION A-A

DESIGN DATA & GENERAL NOTES

- 1) CONCRETE: 5,000 PSI @ 28 DAYS.
- 2) CEMENT: PORTLAND TYPE III PER ASTM C150
- 3) REINFORCING: PER ASTM A615. GRADE 60
- 4) MEETS ALL CENTRAL MAINE POWER COMPANY SPECIFICATIONS FOR 75-500 KVA CONDITIONS.
- 5) APPROX. WEIGHT 16,500 LBS.

TRANSFORMER PAD- 84"X84" (3 PHASE)  
(SMALL, 75-500 KVA, 30)

**George R. Roberts Co.**  
Precast Concrete Products

TPB-84, TPT-84

[www.georgerobertsco.com](http://www.georgerobertsco.com)

192 Biddeford Road Phone 207-324-6571  
Alfred, Maine 04002 Fax 207-324-8533