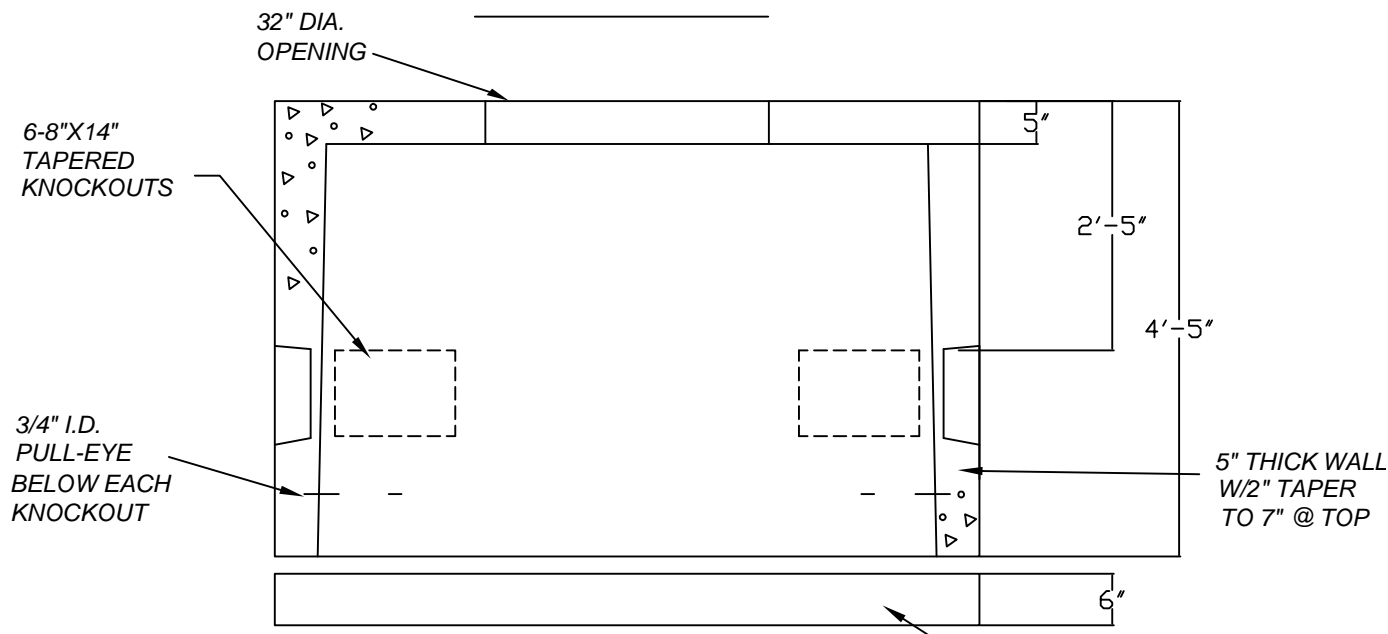


PLAN VIEW



SECTION VIEW

NOTES:

- 1) CONCRETE: 4,000 P.S.I. @ 28 DAYS.
- 2) REINFORCEMENT: GRADE 40 REBAR;
 - #5 @ 8" O.C. VERTICALLY IN WALLS CANTILEVERED OVER TOP OF OPENING.
 - #4 @ 12" O.C. HORIZONTALLY IN WALLS.
 - 4 PIECES #4 SURROUNDING OPENING.
 - #5 @ 8" O.C. EACH WAY ON TOP.
- 3) OPENINGS SIZED FOR 4" & 6" CONDUITS.
- 4) MEETS ALL CENTRAL MAINE POWER SPECIFICATIONS.
- 5) SUITABLE FOR PRIMARY CABLE INSTALLATIONS.
- 6) IF INSTALLED IN A PAVED AREA, ORDER PRECAST SLAB FOR USE UNDER SPLICE BOX / HAND HOLE
- 7) ORDER 32" DIAMETER FRAME & COVER LABELED "CMP CO" OR AS REQUIRED.

4' X 6' X 4'5" TALL SPLICE BOX W/ BASE SLAB

HH-6, HH-SLAB

www.georgerobertsco.com

George R. Roberts Co.
Precast Concrete Products

192 Biddeford Road Phone 207-324-6571
Alfred, Maine 04002 Fax 207-324-8533