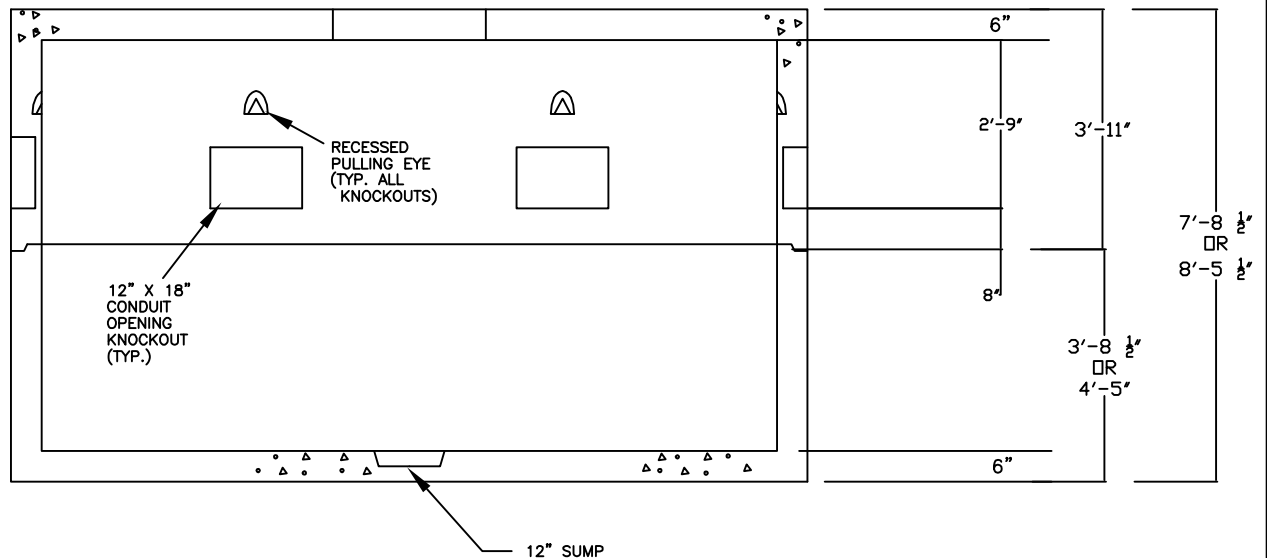


PLAN VIEW



SECTION VIEW

NOTES:

- 1) CONCRETE: 5,000 PSI @ 28 DAYS
- 2) CEMENT: TYPE III PER ASTM C150-81
- 3) DESIGN LOADING: AASHTO HS20-44
- 4) JOINTS TO BE SEALED WATERTIGHT
W/ ASPHALTIC BUTYL SEALANT

6' x 12" LIGHT DUTY UTILITY VAULT-CMP

George R. Roberts Co.
Precast Concrete Products

RST-6X12-TOP-EL
RST-STB-44 OR RST-STB-58

www.georgerobertsco.com

192 Biddeford Road Phone 207-324-6571
Alfred, Maine 04002 Fax 207-324-8533