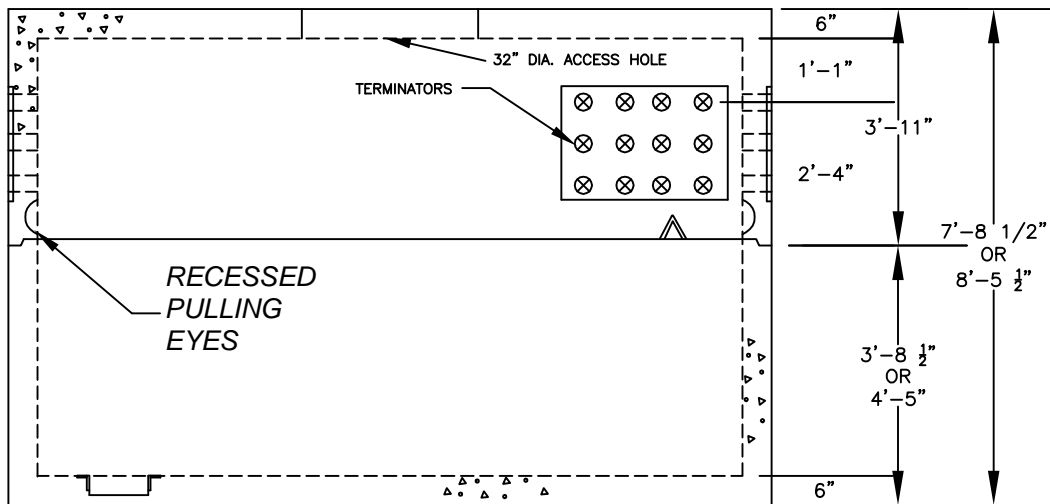
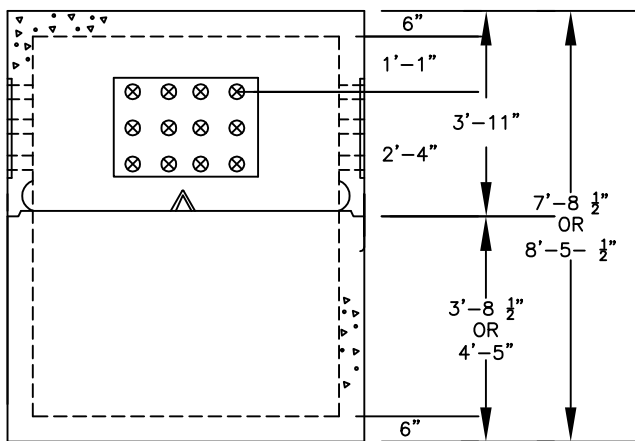


PLAN VIEW



SIDE VIEW



END VIEW

**NOTES:**

1. CONCRETE: 5,000 PSI @ 28 DAYS.
2. REINFORCING PER ASTM A615 GRADE 60. 60,000 PSI YIELD.
3. DESIGN LOADING PER AASHTO HS20-44 AND ACI 318-83 (ASTM H-20)
4. INSERTS, PULLING EYES, DUCT OPENINGS, OR TERMINATORS CAST IN AS REQUIRED.
5. SEALANT: 2 STRIPS OF CONSEAL
6. WEIGHTS: TOP 14,000 LBS  
BASE-16,000 LBS. OR 18,000 LBS

6' X 12' TELEPHONE/COMMUNICATION MANHOLE

RST-STT, RST-STB-44 OR  
RST-STB-58

[www.georgerobertsco.com](http://www.georgerobertsco.com)

**George R. Roberts Co.**  
Precast Concrete Products

192 Biddeford Road Phone 207-324-6571  
Alfred, Maine 04002 Fax 207-324-8533