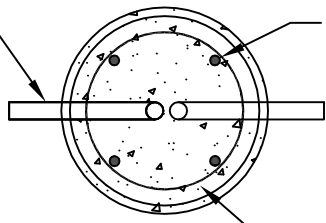
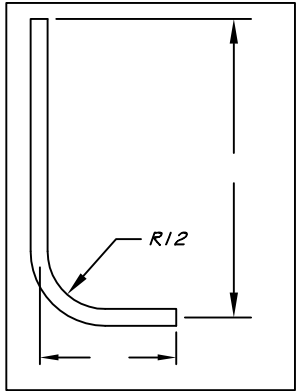


SECTION VIEW

QTY: (VARIES) PVC CONDUIT ORIENTED SQUARE OFF ANCHOR BOLTS



PLAN VIEW



CONDUIT SWEEP DIMENSIONS PLEASE PROVIDE

QTY.	HEIGHT	DIA.
	4'-0" MAX	12"

- NOTES:
- 1) CONCRETE: 5,000 PSI @ 28 DAYS.
  - 2) CEMENT: TYPE III PER ASTM C150-81.
  - 3) REINFORCING: PER ASTM A615, GRADE 60

**LIGHT POLE BASE - 12" DIAMETER**

LPB-\_\_\_\_\_

[www.georgerobertsco.com](http://www.georgerobertsco.com)

**George R. Roberts Co.**  
Precast Concrete Products

192 Biddeford Road Phone 207-324-6571  
Alfred, Maine 04002 Fax 207-324-8533