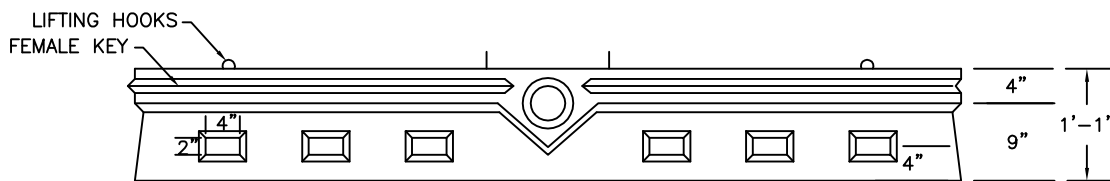
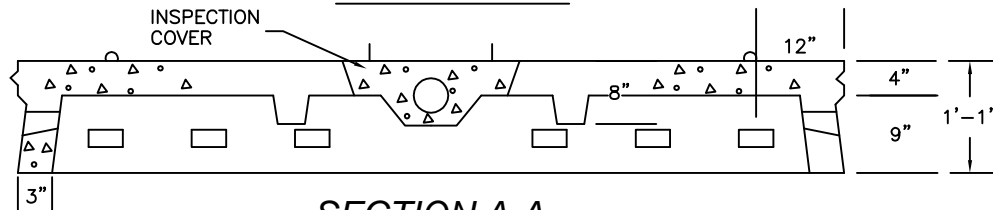


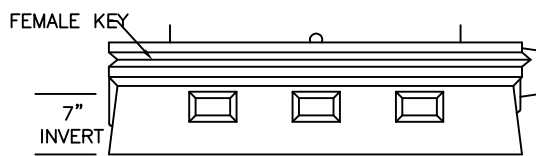
PLAN VIEW



SIDE VIEW



SECTION A-A



RIGHT END VIEW

DESIGN DATA & GENERAL NOTES

- 1) CONCRETE: 5,000 PSI @ 28 DAYS.
- 2) CEMENT: PORTLAND TYPE III PER ASTM C150
- 3) REINFORCING: PER ASTM A615. GRADE 60 & FIBERS
- 4) DESIGN LOADING: H-20
- 5) APPROX. WEIGHT 2,000 LBS.

LEACHING CHAMBER - 4' X 8' X 13" - S (SHORT)

LC-13-S-HD

www.georgerobertsco.com

George R. Roberts Co.
Precast Concrete Products

192 Biddeford Road Phone 207-324-6571
Alfred, Maine 04002 Fax 207-324-8533