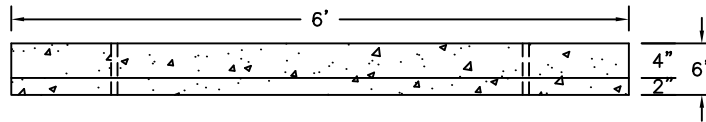


(3) PCS. NO. 3 REBAR

SECTION VIEW



BOTTOM VIEW



FRONT VIEW

DESIGN DATA & GENERAL NOTES

- 1) CONCRETE: 6,000 PSI @ 28 DAYS.
- 2) CEMENT: PORTLAND TYPE III PER ASTM C150
- 3) APPROX. WEIGHT: 380LBS

PARKING LOT CURBING

CRB-PL

www.georgerobertsco.com

George R. Roberts Co.
Precast Concrete Products

192 Biddeford Road Phone 207-324-6571
Alfred, Maine 04002 Fax 207-324-8533