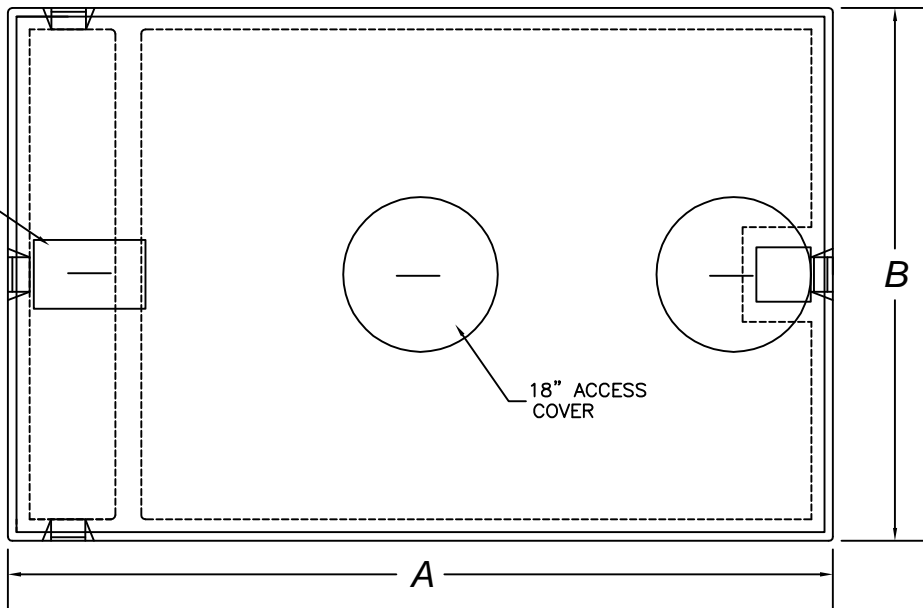
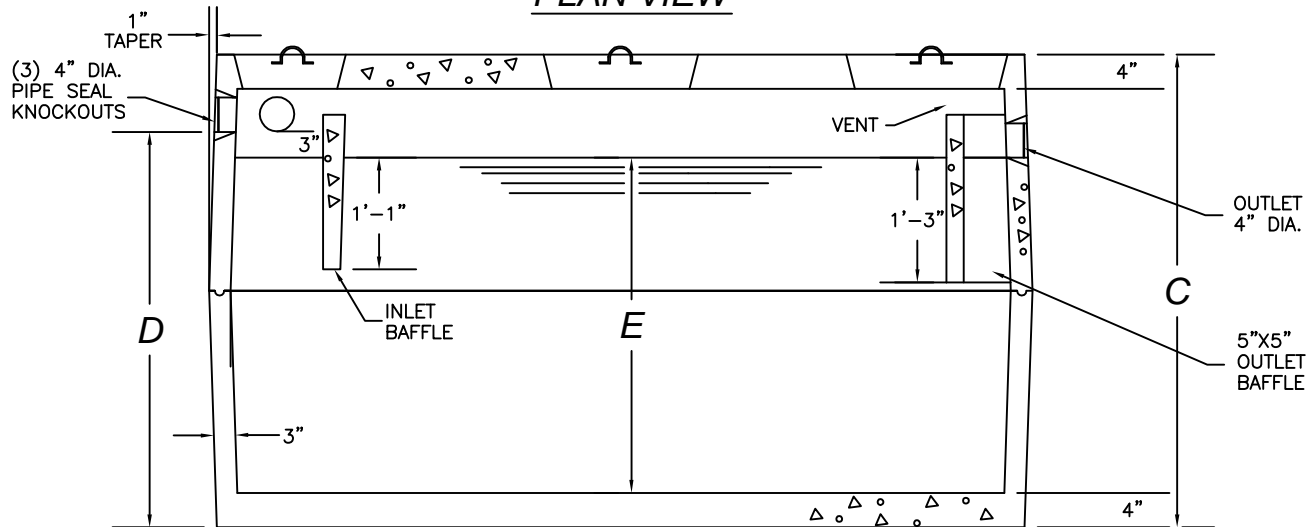


11" X 17"
INSPECTION
COVER



PLAN VIEW



SIDE ELEV. VIEW SECTIONED

DATA CHART

ITEM NO.		GALLON CAPACITY	A	B	C	D	E	APPROX. WEIGHT
STD.	HD.							
RST-750	RST-750-HD	750	8'-0"	6'-0"	4'-0"	3'-1"	2'-3"	7,100 LBS.
RST-1000	RST-1000-HD	1,000	8'-0"	6'-0"	4'-7"	3'-10"	3'-3"	8,100 LBS.
RST-1250	RST-1250-HD	1,250	8'-0"	6'-0"	5'-5"	4'-8"	4'-1"	8,800 LBS.
RST-1500	RST-1500-HD	1,500	8'-0"	6'-0"	6'-3"	5'-6"	4'-11"	9,200 LBS.
RST-2000	RST-2000-HD	1,250	10'-6"	6'-4"	6'-2"	5'-3"	4'-8"	11,200 LBS.

*NOTE: FOR HEAVY-DUTY TANKS (HD), ADD 6" TO DIMENSIONS
IN COLUMN C AND 3" TO THOSE IN COLUMN D.

DESIGN DATA & GENERAL NOTES

- 1) CONCRETE: 4,000 PSI @ 28 DAYS.
- 2) CEMENT: PORTLAND TYPE III PER
ASTM C150
- 3) REINFORCING: 6X6X10WWM OR FIBERS
- 4) DESIGN LOADING: H-10
- 5) CONSTRUCTION JOINTS: SEALED W/BUTYL SEAL
- 6) HEAVY-DUTY TANK TOPS: REINFORCED
W/ 5/8" REBAR @ 12" O.C. EACH WAY

STANDARD RESIDENTIAL SEPTIC TANKS

SEE DATA CHART ABOVE

www.georgerobertsco.com

George R. Roberts Co.
Precast Concrete Products

192 Biddeford Road Phone 207-324-6571
Alfred, Maine 04002 Fax 207-324-8533