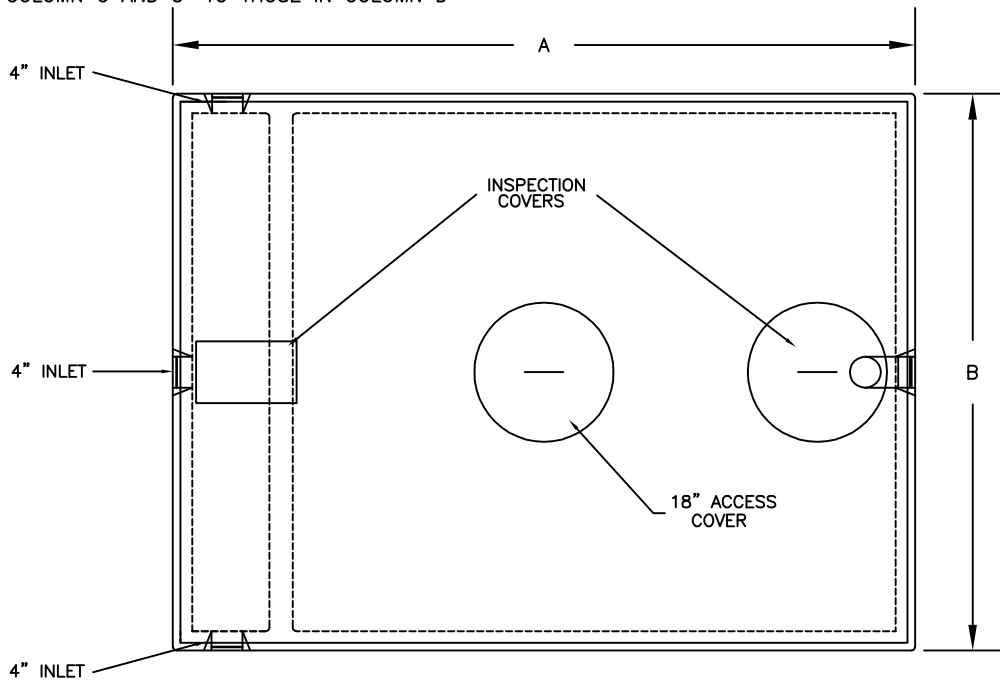
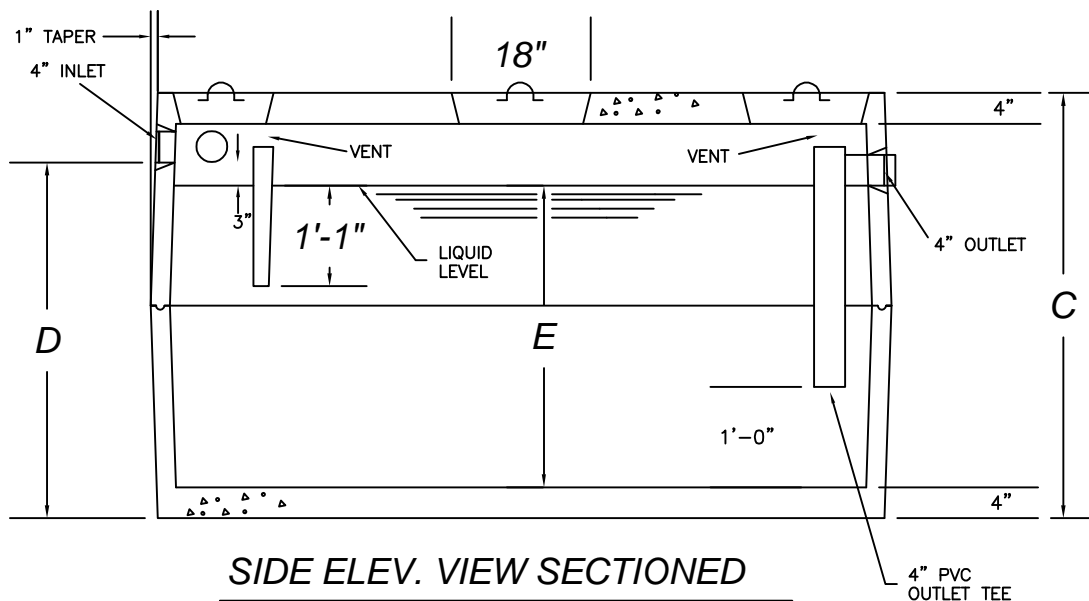


\*NOTE: FOR HEAVY DUTY (HD) TANKS, ADD 6" TO DIMENSIONS IN COLUMN C AND 3" TO THOSE IN COLUMN D



**PLAN VIEW**



**SIDE ELEV. VIEW SECTIONED**

**DATA CHART**

ITEM NO.		GALLON CAPACITY	A	B	C	D	E	APPROX. WEIGHT
STD.	HD.							
GT-750	GT-750-HD	750	8'-0"	6'-0"	4'-0"	3'-1"	2'-3"	7,100 LBS.
GT-1000	GT-1000-HD	1,000	8'-0"	6'-0"	4'-7"	3'-10"	3'-3"	8,100 LBS.
GT-1250	GT-1250-HD	1,250	8'-0"	6'-0"	5'-5"	4'-8"	4'-1"	8,800 LBS.
GT-1500	GT-1500-HD	1,500	8'-0"	6'-0"	6'-3"	5'-6"	4'-11"	9,200 LBS.
GT-2000	GT-2000-HD	1,250	10'-6"	6'-4"	6'-2"	5'-3"	4'-8"	11,200 LBS.

\*NOTE: FOR HEAVY-DUTY GREASE TRAPS (HD), ADD 6" TO DIMENSIONS IN COLUMN C AND 3" TO THOSE IN COLUMN D.

**DESIGN DATA & GENERAL NOTES**

- 1) CONCRETE: 4,000 PSI @ 28 DAYS.
- 2) CEMENT: PORTLAND TYPE I OR III PER ASTM C150.
- 3) REINFORCING: FIBERS.
- 4) DESIGN LOADING: H-10
- 5) CONSTRUCTION JOINT: SEALED WITH BUTYL RUBBER SEALANT.
- 6) HEAVY-DUTY TANK TOPS REINFORCED W/ 5/8" ROD @ 12"O.C. EACH WAY.

**STANDARD GREASE TRAPS**

**VARIOUS ITEM #'S**

[www.georgerobertsco.com](http://www.georgerobertsco.com)

**George R. Roberts Co.**  
Precast Concrete Products

192 Biddeford Road Phone 207-324-6571  
Alfred, Maine 04002 Fax 207-324-8533