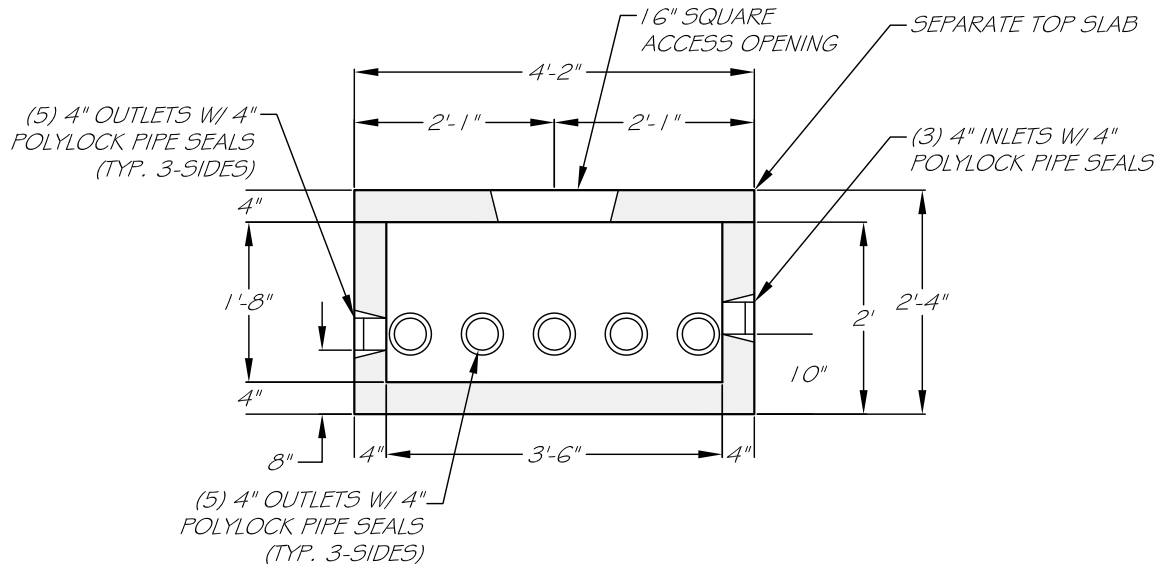


PLAN VIEW

SCALE:
3/8" = 1'-0"



SIDE ELEVATION

DESIGN DATA & GENERAL NOTES

- 1) CONCRETE: 4,000 PSI @ 28 DAYS.
- 2) CEMENT: PORTLAND TYPE I OR III
PER ASTM C150.
- 3) REINFORCING: GRADE 60 REBAR AND STRUCTURAL FIBERS.
- 4) DESIGN LOADING: H-20
- 5) APPROXIMATE WEIGHT: 2,762 LBS. W/ COVER

(INVENTORY CODE: DBP-3-15-H20)

15 - OUTLET H-20 DISTRIBUTION BOX

DBP-3-15-H20

www.georgerobertsco.com

George R. Roberts Co.
Precast Concrete Products

192 Biddeford Road Phone 207-324-6571
Alfred, Maine 04002 Fax 207-324-8533