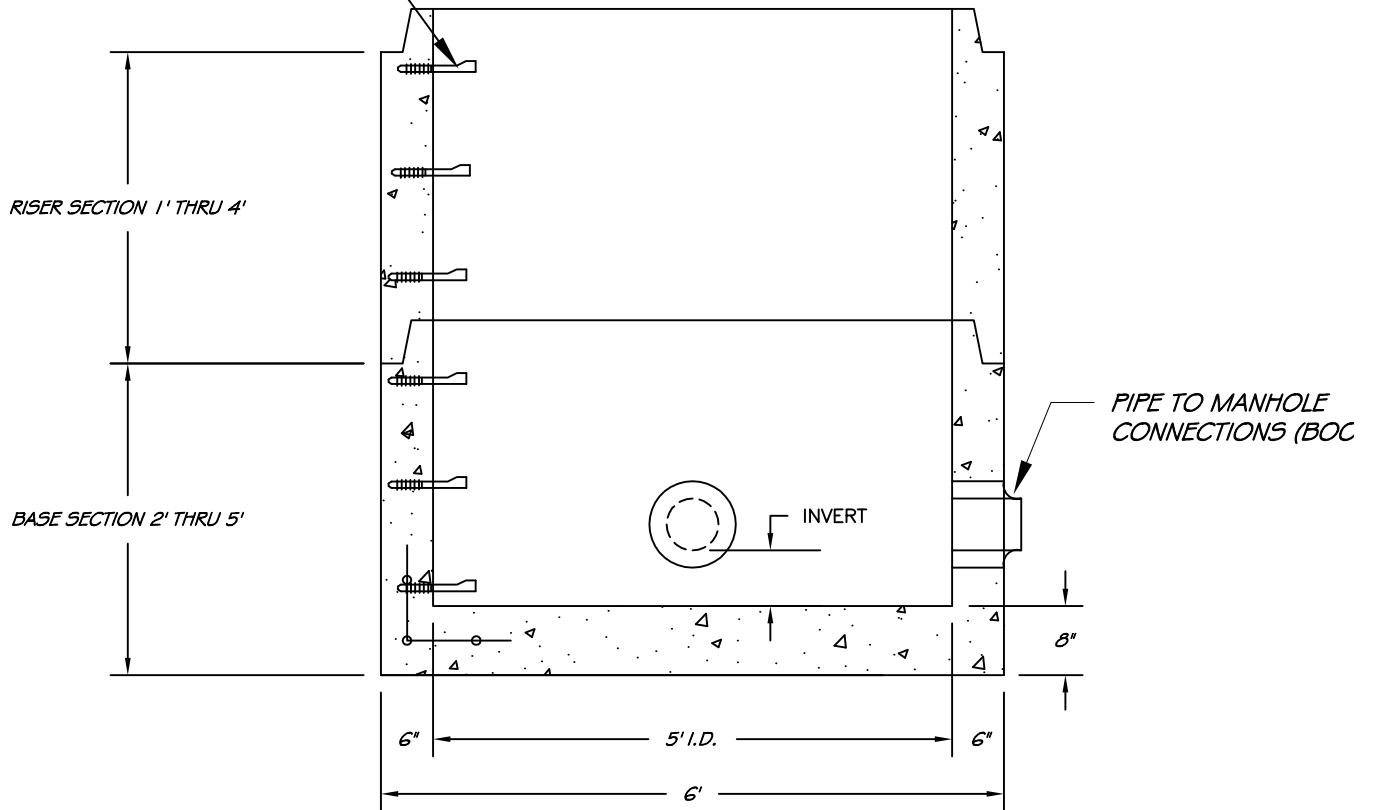


MANHOLE STEPS @ 12" O.C.



SECTION VIEW

NOTES:

- 1) CONCRETE: 5,000 PSI @ 28 DAYS.
- 2) CEMENT: TYPE III PER ASTM C150-81.
- 3) DESIGN LOADING: H-20 PER ASTM C-478.
- 4) REINFORCING: WWR - MIN 0.15 SQ. IN./SQ. FT.
- 5) ONE POUR MONOLITHIC BASE SECTION
- 6) STEPS ARE STEEL REINFORCED COPOLYMER POLYPROPYLENE PLASTIC STEP.
(CONFORMS TO ASTM C478 PARA.. 11 SPEC.)
- 7) JOINTS TO BE SEALED W/2-STRIPS OF "CON-SEAL".
(CONFORMS TO ASTM C443 SPEC. AND FEDERAL SPEC. SS-S-210A)
- 8) TOP SLAB IS STEEL REINFORCED TO EXCEED DESIGN LOAD

SANITARY ,MANHOLE 5 ft. DIAMETER

MH5-_____

www.georgerobertsco.com

George R. Roberts Co.
Precast Concrete Products

192 Biddeford Road Phone 207-324-6571
Alfred, Maine 04002 Fax 207-324-8533