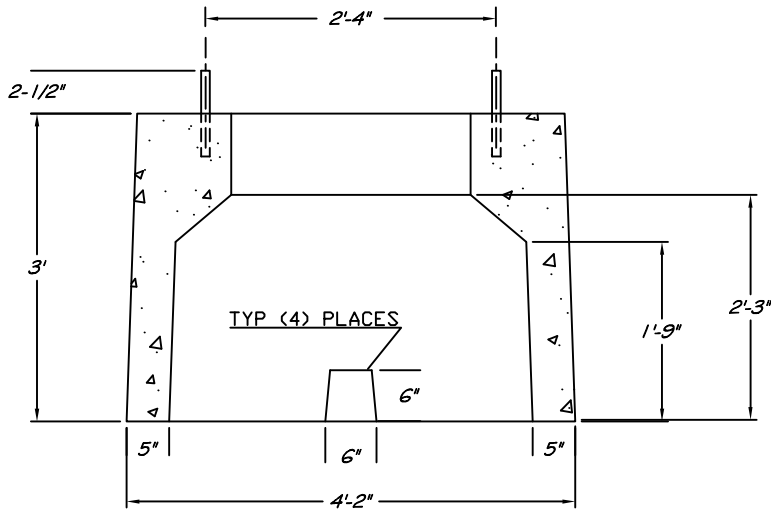


PLAN VIEW



SECTION VIEW

DESIGN & GENERAL NOTES

1. CONCRETE: 5,000 psi @ 28 DAYS
2. CEMENT: PORTLAND TYPE III PER ASTM C 150
3. REINFORCING: STRUCTURAL FIBERS PER ASTM C 1116
4. MEETS CMP SPECS FOR 25-167 KVA CONDITIONS
5. APPROX. WEIGHT 2,050 lbs

TRANSFORMER PAD - SINGLE PHASE (CMP)

George R. Roberts Co.
Precast Concrete Products

TP-SP

www.georgerobertsco.com

192 Biddeford Road Phone 207-324-6571
Alfred, Maine 04002 Fax 207-324-8533